

© 2015 m.tree
All rights reserved.
m.tree
CHANGE FOR ALL

NEWSLETTER

VOL.1





TIMELINE

Mtree: Mustard Tree

Mtree, short for Mustard Tree, derives its name from its representation of the organic change and growth from a seed to a tree. As a global-minded non-profit organization, Mtree brings opportunities to learn about self and others through medium of arts in design in developing countries. Collaborating with artists and designers around the world, Mtree has implemented its learning-in-arts programs, learning-in-living global citizenship education, and Fit-in-Community appropriate building technology and community planning in our partnering communities in Africa and the Middle East. Like a farmer, we plant a seed of hope in forms of arts and design to learn about each other, to build up each other.

7 years and more

Since 2011, Mtree dreams of communities whose members are sensitive, compassionate, responsible, and act upon the deep ties that lie within all humanity. More than 200 artists around the world who share this common vision have joined Mtree, interacting with children and youth in developing countries through visual arts, fashion design, dance, music, global citizenship education and architecture. These children learn how to listen to their inner voice, build each other up and enjoy the meaning of community through the lens of visual and performing arts. Mtree is glad and grateful to share our path for last seven years with all our partners, supporters, and friends through this newsletter.

2011

NEW YORK
Mtree was found and registered as a non-profit organization, 501(C)3.



IFANGNI, BENIN: 1st trip
Brush with Hope served more than 300 children who have never met artists before.



New York
1st Brush with Hope Exhibition in Chelsea



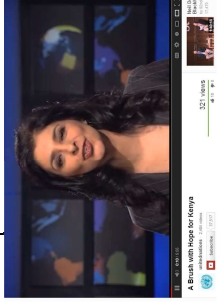
2012
BENIN & KENYA
Launched Fashion for All and Sing for Hope program

2013



MTWAPA, KENYA
Fit-in-Community.
1st architecture project. Mtree donated the first house built by appropriate technology to a homeless family

UN NEWS
Brush with Hope Exhibition and Mtree was featured in UN News



2014

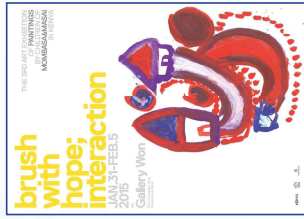


ENDOINYO ENKER, KEYNA
Brush with Hope and Fashion for All program in a Masaai Tribal community with Kenyan artists



DESIGN COPRS SEED INTERNATIONAL AWARD

Design Corps Seed Award: built community space and a school using appropriate building technology in Maya community, winning an international award



SEOUL, KOREA

Mtree invited 4 Kenyan children to its exhibition in Seoul, and they curated their artworks to the Kenyan Ambassador in Korea

2015

HEBRON, PALESTINE with KOICA
Mtree's first programs in the Middle East & first dancing performance by Palestine teenager girls in the public.



MAYA, KEYNA
First learning-in-living Global Citizenship Education with students from US,

2016



2018



MOU WITH UNIVERSITY OF NAIROBI, KENYA
Master students in School of design research on Mtree programs

PROJECT WITH TEAM&TEAM, MAYA, KENYA
developed clean water system



MOU WITH PWANI UNIVERSITY, KENYA
Official partnership with Pwani University, the largest university in the Kilifi County.



COLLABORATION WITH FOREVER 21, USA

launched capsule tote bag collection

2018



KILIFI, KENYA

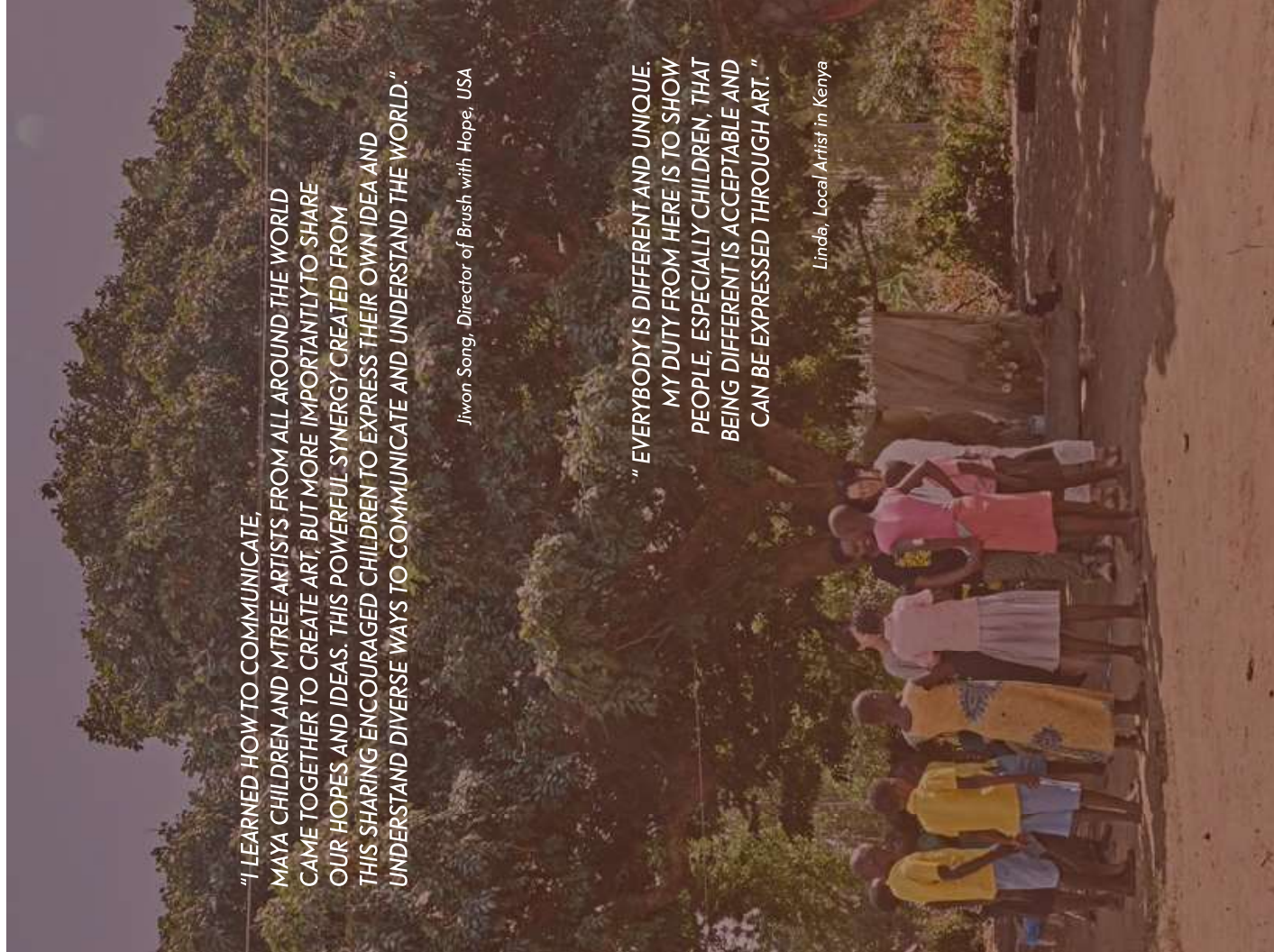
Collaboration with local organization to serve teenager girls in Kilifi, Kenya. Potential discussion on serving children in Syrian refugee camps in Lebanon

2017



MAYA, KEYNA

Expanded Mtree programs with Kenyan artists, Mtree was asked to create an art-teacher curriculum at Pwani University



"I LEARNED HOW TO COMMUNICATE, MAYA CHILDREN AND MTREE ARTISTS FROM ALL AROUND THE WORLD CAME TOGETHER TO CREATE ART, BUT MORE IMPORTANTLY TO SHARE OUR HOPES AND IDEAS. THIS POWERFUL SYNERGY CREATED FROM THIS SHARING ENCOURAGED CHILDREN TO EXPRESS THEIR OWN IDEA AND UNDERSTAND DIVERSE WAYS TO COMMUNICATE AND UNDERSTAND THE WORLD."

Jiwon Song, Director of Brush with Hope, USA

"EVERYBODY IS DIFFERENT AND UNIQUE. MY DUTY FROM HERE IS TO SHOW PEOPLE, ESPECIALLY CHILDREN, THAT BEING DIFFERENT IS ACCEPTABLE AND CAN BE EXPRESSED THROUGH ART."

Linda, Local Artist in Kenya



Group Work: Hope Tree

Brush with Hope students were guided to imagine a seed growing into a beautiful hope tree while they explored their own feelings and ideas using various mediums, such as acrylic paint, straws, color paper, pipe cleaner, and yarns to play and paint. They created a colorful collage on a circular paper to represent their own seed of hope and exchanges ideas what kinds of tree the seed will grow into. They visualized their full-grown trees with many fruits, which resemble each child's hope and dream. Evaline drew many colorful dresses on the tree because she wants to become a fashion designer and design dresses for her friends and family. Robert drew many water tanks and a van on the tree because he wants to become a van driver who delivers water to different community.



Group Work: “What does our community need?”

Participating students brainstormed great things about Maya community then discussed what would help to make Maya community a better place. Immediately, they thoughtfully responded that the community was in need of school, vans, water tanks, church, hospital, and hotel. With this discussion and idea exchanges, the students created a group painting using various tools such as straw, wood sticks, and different methods such as blowing. The students discussed the topic with seriousness but created the work with excitement as they told stories to one another.

Letter from Yohan

It's been a seven year journey (and counting) with 200 artists and designers around the world to meet more than 1000 children and youth in Africa through the very language of arts. When I started Mtree in 2010, people asked what art meant to children without food and basic education. But artists asked me how they can help and what they can do. My answer was simple and stays the same for the past seven years. That is the very reason that we need to go to these underserved communities and bring up a sense of self and sense of community through the language of arts. It is not only medicine, food, or other basic necessities that children in marginalized communities need to live up to their full potential. By learning about themselves and others through the language of arts, their minds get stronger and they are better able to visualize and actualize their dreams and hopes.

The best moment that I remember is when participating children were asked to draw a village of their dream as one of their projects. Watching twelve children sitting head to head on the classroom floor and discussing what their community needed to make a better future for all, I recognized that these children were stepping outside of their traditional learning paradigm, which were merely measured by examinations and their individual scores through zero-sum competition. It is my hope that these children will continue to visualize their dreams and hopes through our arts programs and dedicated teachers will work alongside one another, and together develop ideas for the common good of their community and society.

It was a long, hard struggle starting from a mere seed to what is now a spout, but Mtree has been and is meaningful and joyful part of my life. Connecting with Kenyan artists, universities and other arts and design institutes around the world through partnerships, we are ready to be a more integral part of the dreams of the children we serve. I want to thank all of you for your prayers, support, and encouragement for our work and what we believe in. Without your trust and friendship, we could never have come this far. I am excited to share our first Mtree Newsletter with you to celebrate the International Children's Art week. And we look forward to sharing more hopeful news with you soon!

Yohan Choi, Mtree INC Founder & Chief Mission Officer

